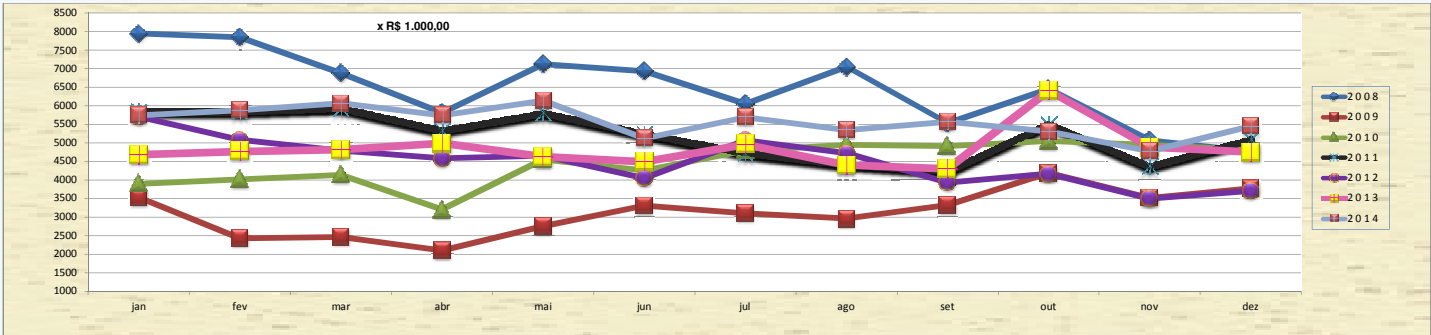


FATURAMENTO

TABELA	2008	2009	2010	2011	2012	2013	2014												TOTAL 2014
							jan	fev	mar	abr	mai	jun	jul	ago	set	out	nov	dez	
1-Infra.Estrutura.Aquaviário	14.601.646	14.550.257	23.239.040	21.509.442	20.413.471	24.592.815	2.473.430	2.152.457	2.517.968	2.175.524	2.413.395	1.958.818	2.402.294	2.184.545	2.419.572	2.444.002	2.050.645	2.366.719	27.559.369
2-Util.Instal.Acostagem	563.072	176.951	198.607	168.668	124.552	133.095	21.062	15.355	15.595	-	17.680	9.183	-	-	-	-	-	4.456	83.331
3-Util.Infra.Estrut.Terrestre	1.942.069	86.074	223.941	2.619.089	2.356.739	6.251.098	748.686	747.443	749.893	437.059	436.626	436.710	436.570	436.570	472.424	454.497	454.547	740.527	6.551.552
4-Serviços Diversos				2.101.838	3.223.868	3.101.361	165.211	287.852	279.251	30.904	70.448	23.164	22.668	27.121	35.037	22.621	34.321	89.793	1.088.391
5-Serviços Armazenagem	42.581.147	8.726.191	11.375.086	12.321.214	7.440.882	2.197.557	196.018	101.496	230.494	924.079	813.737	817.645	800.000	800.000	800.000	800.000	800.000	800.000	7.883.469
7-Serviços Diversos	4.694.489	3.091.025	5.470.643	3.444.244	-	-	-	-	-	-	-	-	-	-	-	-	-	-	-
8-Arendamento TECONVI	12.800.379	10.811.498	13.039.360	19.776.923	20.428.275	21.839.671	2.139.122	2.574.641	2.271.220	2.180.025	2.390.383	1.873.556	2.032.614	1.904.347	1.851.793	1.582.416	1.433.723	1.446.573	23.680.413
TOTAL	77.182.802	37.441.996	53.546.677	61.941.418	53.987.787	58.115.597	5.743.529	5.879.244	6.064.421	5.747.591	6.142.269	5.119.076	5.694.146	5.352.583	5.578.826	5.303.536	4.773.236	5.448.068	R\$ 66.846.525

Total sem tab 8

média mês



PRINCIPAIS ITENS de ARRECADAÇÃO

- tabela c/maior faturamento	Tabela 5	Tabela 5	Tabela 1	Tabela 8	Tabela 8	Tabela 8	Tabela 8	Tabela 8	Tabela 8	Tabela 8	Tabela 1	Tabela 1	Tabela 1
- percentuais sobre total	55,2%	23,3%	43,4%	37,24%	43,79%	37,45%	37,93%	38,82%	36,60%	42,19%	40,81%	43,37%	